

TECHNICAL DATA - INSTALLATION INSTRUCTIONS

Model FRB WiFi BE23059



Non-binding pictures



Outdoor



Outdoor

● Recommendations

Thank you for choosing a STRAMATEL scoreboard!

We hope that you will be fully satisfied with our product. For any information, please do not hesitate to contact us.

In order to install the scoreboard set correctly, we recommend that the instructions indicated are followed correctly, and that the material supplied by STRAMATEL is used correctly without any alteration.

However, if extra information is required, please contact Stramatel technical service with the model reference and serial number (on the sticker under the control console).

Any alteration made to the equipment delivered may deteriorate it and result in the cancelling of the warranty.

Caution: Installation must be performed by qualified staff and must comply with IEC 364 and national wiring regulations.

● Technical data

Equipment for outdoor use.

The control console should be protected against bad weather conditions (during the operation but also when the scoreboard is not in use).

Use a soft dry cloth to clean the equipment.

Scoreboard

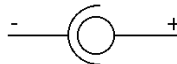
Class I equipment – Must be connected to earth.

Dimensions	1800 x 1000 x 90 mm
Weight	34 kg
Power supply	100-240V 50/60Hz 3,08-1,28A
Power consumed	66VA (max)



Control console

Dimensions	340 x 175 x 60 mm
Weight	790 g
Transmission frequency	863 - 870 MHz
Power supply	100-240V 50/60Hz / 12Vdc 500mA
Internal batteries	NIMH 5x1,2V 1300mAh (22 hours autonomy)



Use only power supply and batteries supplied by STRAMATEL.

Control console recharge: turn off and disconnect the USB keyboard. Plug the power supply into the back of the control console, then plug it into an appropriate mains outlet (the socket should be as close as possible to the control console and must be easily accessible).

Leave the control console under constant recharge when not in use.

● Environment and recycling

Please help us to protect the environment by disposing of the packaging in accordance with the national regulations for waste processing.



Recycling of obsolete appliances: appliances with this label must not be disposed off with the general waste. They must be collected separately and disposed off according to local regulations.

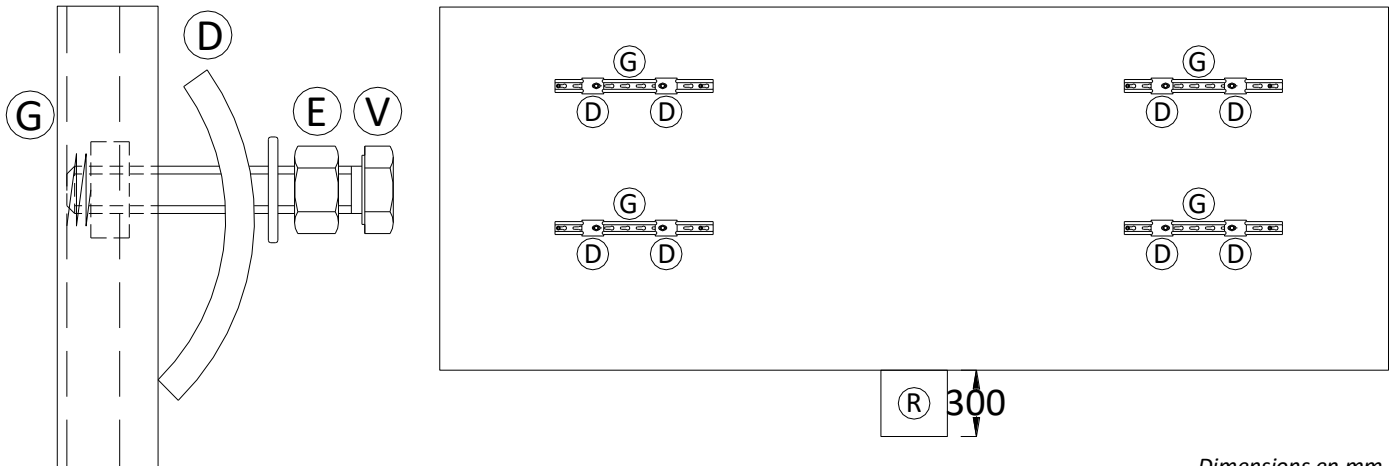
● Installation on I-Beams - Before installation

The electronic elements controlling the luminous display are mounted on extractable racks (R). In order to be able to carry out any maintenance, a clear space of at least 30 cm is necessary for the extraction of the racks. Attention: installation must be performed by qualified staff.

The scoreboard will be fixed onto 2 vertical 180x90mm I-Beams with supplied fixing clamps (D).

Insert 2 M10 spring nuts in each fastening rail (G).

Fix 2 clamps (D) on each fastening rail (G) as mentioned below. Tighten the screws (V), then unscrew them by quarter a turn (as a first step, the clamps should not be fully tightened).



Dimensions en mm

● Installation on I-Beams - Scoreboard installation

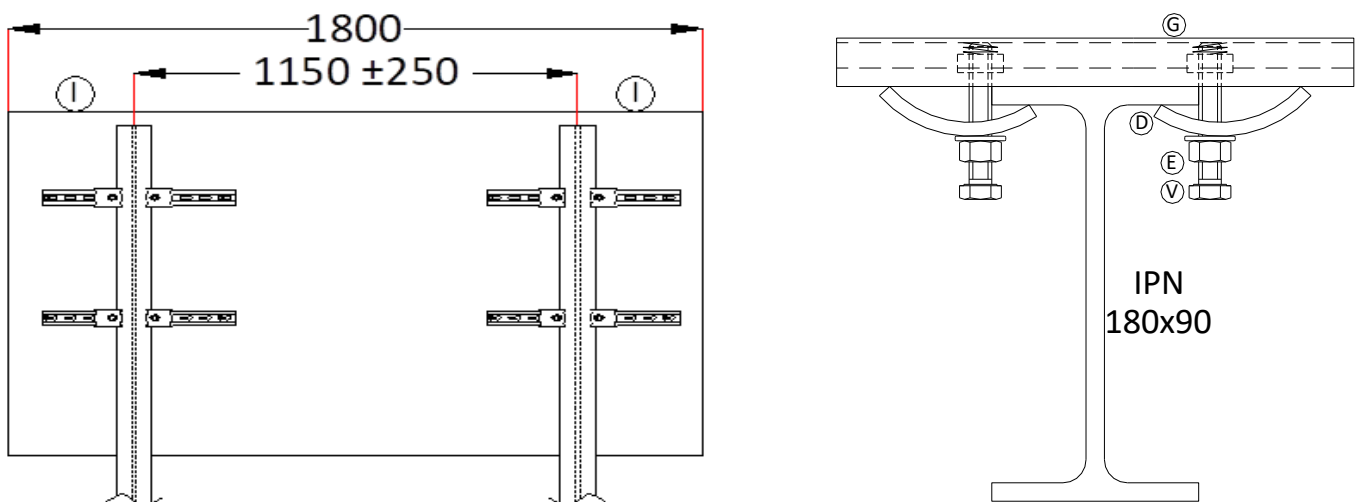
In order to make the installation easier, the anchor points (I), located on the top side of the module can be used (NB: Anchor points = insert holes in aluminium frame). If you want to use them to lift or install the module, replace the black plastic screws by M6x40 eyescrews (closed rings, not supplied). Caution: the black plastic screws should not be used to lift or fix the module (they are only dedicated to protect the scoreboard from water intrusion).

Lift the scoreboard and lean it against the 2 vertical 180x90mm I-Beams. Make sure the scoreboard is in a horizontal position.

On each fastening rail, move the clamps as close to the I-beams as possible (the screws should imperatively touch the I-Beam to make sure the clamps are properly fixed). Tighten the screws (V) on the fastening rails (G).

Tighten the lock nuts (E) to secure the clamps (D) on each I-Beam

Put the black plastic screws back into anchor points (I).





Outdoor



Outdoor

● Electrical installation

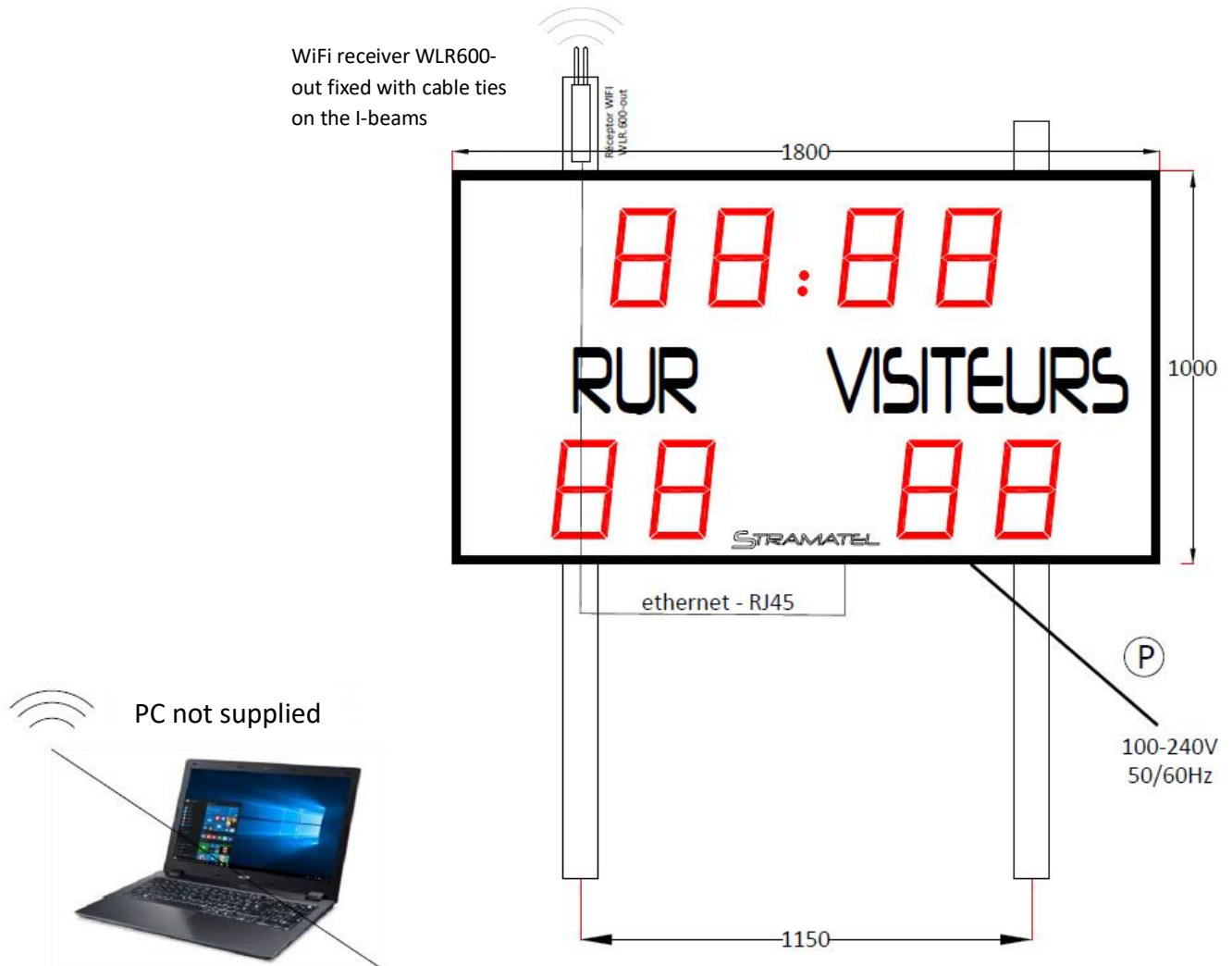
Caution: the system must not be powered on before the installation has been fully completed.

WiFi receiver

Fix the WiFi receiver on the I-beam above the scoreboard using cable ties.

Câble secteur (P)

Connect the cable (P) to a 100–240V power supply (electrical connection) inside a waterproof box. The electrical supply must be protected by a 4A bipolar circuit breaker (not supplied). The circuit breaker must be easily accessible.



End of installation

Switch on the scoreboard.
Carry out a full system test.



In case a cable set needs to be installed: control cable and wall junction box

Caution: the scoreboard must not be connected to mains before installation has been fully completed.

Control cable and wall junction box

The transmission cable supplied is a telephone cable: type 2 pairs 6/10ths.

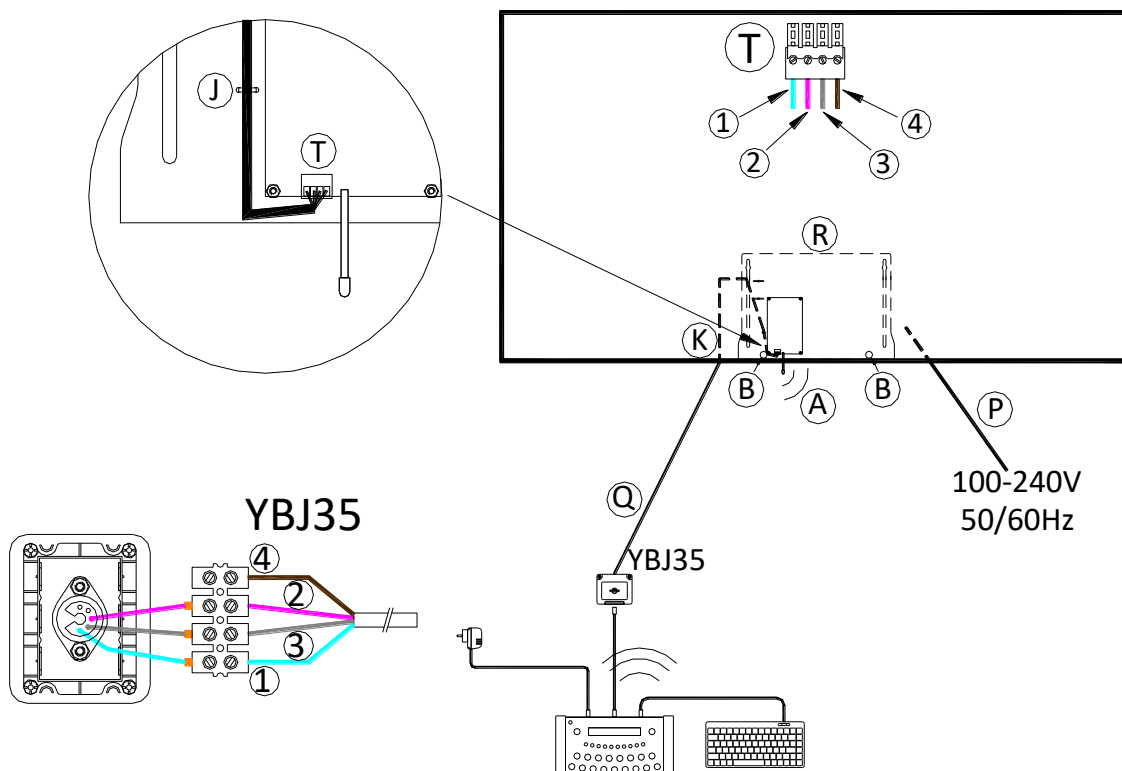
Mount the wall junction box YBJ35 onto the wall close to the scoring table.

Connect the control cable (Q) on the connector (T) of the scoreboard making sure that the colour code is followed (Please note – RS485: Rx+ and Rx- must be connected on a twisted pair).

- ✓ Extract the electronic rack (R) from the scoreboard: unscrew the two nuts (B) with a 7 mm pipe spanner, then let the rack (R) slide downwards.
- ✓ Put the connector (T) inside the scoreboard through the grommet (K).
- ✓ Plug the connector (T) on the electronic circuit board and fix the cable on the rack with a plastic collar (J).
- ✓ Put the rack (R) back inside the scoreboard and screw the two nuts (B).

Fix the control cable into place making sure that it does not run alongside the 100-240V mains cables.

Connect the end wires into the junction box YBJ35, making sure that the colour code is followed. If several units are connected together, their cables must be wired in parallel in the wall junction box.



Control cable (Q): (1) = GND = blue wire / (2) = Rx+ = white wire / (3) = Rx- = grey wire / (4) = +24V = transparent wire

● End of the installation

Turn on the power.


Try out the scoreboard operating functions (see operating functions).



ZI de Bel Air

44850 LE CELLIER

FRANCE

: +33 (0)2 40 25 46 90

Fax: +33 (0)2 40 25 30 63

 stramatel@stramatel.com

www.stramatel.com